



## Kinoma Player 4 EX

Version 4.4

Copyright ©2002 – 2007 Kinoma, Inc. All rights reserved.

Use of this software is governed by the End User License Agreement supplied together with this software. If you did not receive the End User License Agreement you may not use Kinoma Player 4 EX. The End User License Agreement may be downloaded from the Kinoma web site.

<http://www.kinoma.com>

Kinoma is a registered trademark of Kinoma, Inc.

Sony, CLIE and Memory Stick are registered trademarks of Sony, Inc.

HotSync and Palm OS are registered trademarks and the HotSync logo is a trademark of Palm, Inc. or its subsidiaries.

Palm, LifeDrive, Treo, Tungsten and Zire are registered trademarks, of Palm, Inc. or its subsidiaries.

Apple, iTunes and QuickTime are registered trademarks of Apple Computer, Inc.

Tapwave and Zodiac are trademarks of Tapwave, Inc.

Adobe and Flash are registered trademarks of Adobe, Inc.

Microsoft, Windows and Windows Media are registered trademarks of Microsoft Inc. This product is protected by certain intellectual property rights of Microsoft Corporation. Use or distribution of such technology outside of this product is prohibited without a license from Microsoft or an authorized Microsoft subsidiary.

All other trademarks are trademarks of their respective owners.

Kinoma Player 4 EX includes MathLib for certain floating point math calculations. You may learn more about MathLib at <http://www.radiks.net/~rhuebner/mathlib.html>. MathLib is released under the LGPL:

MathLib is free software; you can redistribute it and/or modify it under the terms of the GNU Library General Public License as published by the Free Software Foundation; either version 2 of the License, or (at your option) any later version.

MathLib is distributed in the hope that it will be useful, but WITHOUT ANY WARRANTY; without even the implied warranty of MERCHANTABILITY or FITNESS FOR A PARTICULAR PURPOSE. See the GNU Library General Public License for more details.

LGPL license is available at <http://www.radiks.net/~rhuebner/copying.txt> or by sending email to [support@kinoma.com](mailto:support@kinoma.com).

## Introduction

Kinoma Player 4 EX is a high performance digital media player for handhelds and mobile phones running Palm OS 5. It supports playback of video, music, animation and photos using the advanced compression technologies including MPEG-4 and Windows Media video, AAC, MP3 and Windows Media audio and JPEG. Kinoma Player 4 EX makes it possible to play many popular digital media file formats on Palm Powered handhelds including MPEG-4, 3GPP, QuickTime, Flash Video, iTunes audio and JPEG images. Kinoma 4 EX supports many common streaming media protocols including RTSP, Windows Media, progressive download and live MP3 audio.

Kinoma Player 4 EX takes advantage of many of the unique features offered by Palm Powered handheld and mobile phone manufacturers, including support for 5-way navigation, jog dial, keyboard, wide screens and virtual Graffiti areas.

## Devices Supported

Kinoma Player 4 EX is designed to operate on all handhelds running any version of Palm OS 5. It has been successfully tested on handhelds manufactured by Palm, Sony, Tapwave and Garmin.

Kinoma Player 4 EX includes several native PACE Native Objects (also called PNOs and ARMlets) to boost performance and maximize battery life.

## Kinoma Media Guide

The Kinoma Media Guide is an index of free streaming media from around the internet. The Guide is filled with links to popular podcasts, radio stations, streaming video, photo slide shows, live webcams and much more. You access the Kinoma Media Guide from the bookmark list from an internet connected handheld running Kinoma Player 4 EX.



Media included in the guide is selected to be compatible with Kinoma Player 4 EX. The Kinoma Media Guide eliminates the need to search for streaming media compatible with

your handheld by providing hundreds of compatible feeds, many updated daily. The Kinoma Media Guide is delivered to your handheld or phone live from the Kinoma web site and is updated regularly with new content.

**Note:** The media listed in the Kinoma Media Guide is provided by web sites from around the internet. Kinoma strives to keep the Kinoma Media Guide up-to-date. However because Kinoma is not streaming the media content, Kinoma cannot guarantee that the media listed in the Kinoma Media Guide will always be available or be compatible with Kinoma Player 4 EX.

Kinoma Player 4 EX automatically caches frequently visited Kinoma Media Guide content feed lists on your handheld to provide accelerated access to your favorite content. Some feeds disallow caching and so cannot be accelerated.

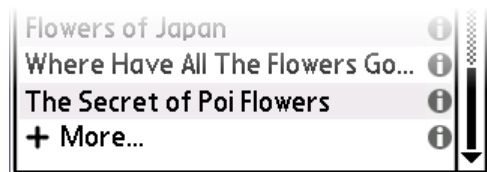
If you know about some great internet media that should be part of the Kinoma Media Guide, we want to hear about it. Use the web page at <http://go.kinoma.com/?guide-suggestion> to tell us.

## Search

Select Kinoma Media Guide categories provide a ‘Search’ item, for finding internet media.



Search results are displayed in the media browser. When there are more search results than can be viewed on a single screen, a ‘More...’ item appears at the end of the list.



Select ‘More...’ to retrieve the next set of search results.

## Content Compatibility

Kinoma Player 4 EX supports a wide variety of audio and video compression technologies, digital media file formats and streaming media network protocols. The goal

of all the technology packed into Kinoma Player 4 EX is to let you effortlessly enjoy as much digital media as possible on your handheld.

Your handheld device differs from a personal computer in many ways. Those differences impact the digital media you can play on your handheld. For example:

- A typical notebook computer has 5 to 10 times the computing power of a typical handheld, which means a handheld cannot achieve the same video frame rates or frame sizes as a computer. And a typical desktop computer has 10 to 20 times the computing power of a handheld.
- Computers are typically connected to broadband internet connections, which provide extremely high speed access to digital media content. The data networks available to cell phones typically deliver considerably lower data speeds. Even handhelds equipped with Wi-Fi cards cannot achieve the same network bandwidth as a computer attached to the same Wi-Fi network.
- Reading from a memory storage card on a handheld device typically takes more time than reading from a hard disk on a computer, meaning that a handheld device must work longer to read the digital media data from a memory card, which reduces playback performance.
- Computers typically have many times more memory available for storing program data and caching media data.

At this time, much of the digital media content available on the internet is optimized for playback on personal computers or dedicated portable media player devices with special accelerator hardware. This is particularly true for digital video. Kinoma Player 4 EX uses a variety of techniques to achieve the best possible results for each media item. However, it is not always possible to achieve the same result that you are accustomed to on a personal computer or a dedicated portable media player device.

Kinoma Player 4 EX supports playback of content stored in several different file formats. The following table summarizes the digital media file formats supported by Kinoma Player 4 EX.

File format	File extensions	Compatibility notes
AAC audio	.m4a, .m4b	M4A audio created with iTunes is supported. DRM protected content, e.g. .m4p files, is not supported.
3GP	.3gp, .3g2	All features of MPEG-4 plus GSM AMR and CDMA QCELP audio supported on Treo phones. Text tracks not supported.
Flash Video	.flv	H.263 video and MP3 audio are supported.
JPEG	.jpg	Large progressive JPEG images may not display on devices with insufficient memory. YUV color space images only.
MPEG-4	.mp4	MPEG-4 simple profile video, H.263 video and AAC low complexity audio.
MP3	.mp3	All features of MPEG-1, Layer 3 audio are supported.
QuickTime movie	.mov, .mqv	All features of MPEG-4 plus support for uncompressed audio and JPEG video.
QuickTime VR panorama	.mov	Single node cubic panoramas using JPEG compression.
Windows Media	.asf, .wma, .wmv	Windows Media Video 9, Windows Media Audio, MPEG-4 video, MP3 audio and JPEG image compression are supported.

Kinoma Player 4 EX contains extensive support for playing internet media streams. There are a several different network protocols for delivering digital media from the internet. The following table summarizes the network protocols supported by Kinoma Player 4 EX.

Network protocol	URL prefix	Compatibility notes
Hypertext transfer protocol	http://	HTTP 1.0 and HTTP 1.1.
Real time streaming protocol	rtsp://	RTSP 1.0.
Multimedia streaming protocol	mms://	Windows Media mms URLs are issued as http requests to source media server.

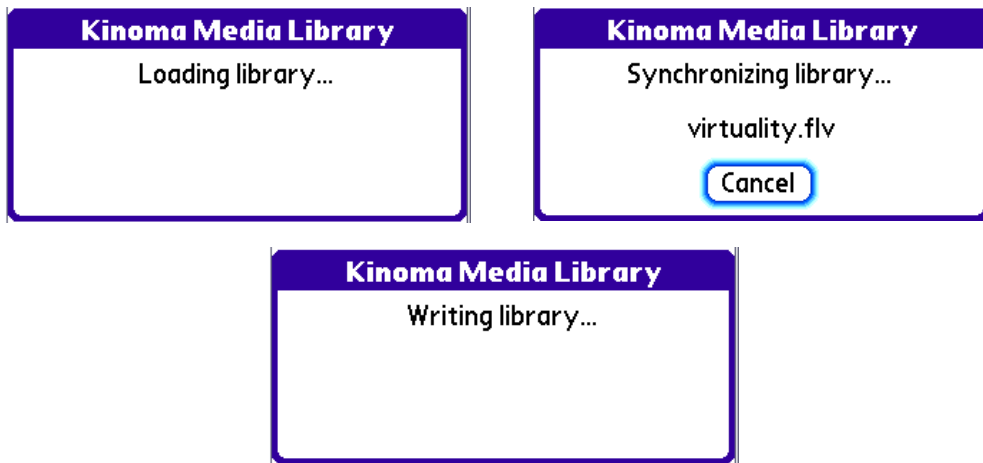
Kinoma Player 4 EX supports several playlist file formats. Playlists may be stored on a memory card or a web server. The following table summarizes the playlist file formats supported by Kinoma Player 4 EX:

File format	File extensions	Compatibility notes
MP3 playlist	.m3u	
Playlist	.pls	
RSS	.rss	RSS version 2.0 supported, with limited support for Yahoo defined “media:” extensions.
Windows Media metafile	.asx	A limited set of tags is supported.
Outline Processor Markup Language	.opml	

Kinoma Player 4 EX supports several metafile formats. In most cases, you do not need to be aware of these files: they are used by web servers to trigger playback of streaming media from a web browser. Kinoma Player 4 EX supports these files automatically, without any user interaction required. In many cases Kinoma Player 4 EX supports only a limited subset of the features of the metafile format, supporting enough to allow playback of the stream. The metafile formats supported by Kinoma Player 4 EX are .sdp, .qtl and .pvx. In some situations, .m3u, .pls and .asx playlist files are used as metafiles by web sites.

## Content Synchronization

Kinoma Player 4 EX uses a distributed media library to manage the display of digital media content in your handheld device and on memory cards. The media library stores information about each media file. The first time Kinoma Player 4 EX encounters a memory card or handheld device, all the digital media files are added to the media library. If you have many files on your handheld device or memory card, this initial scan may take some time. The media library is stored in the handheld device or memory card for fast access the next time you run Kinoma Player 4 EX.



The media scanning process is called “automatic library synchronization.” Once the media library has been built, only modified or new files need to be synchronized, significantly improving application startup time.

If you don’t change the media on your handheld device or memory card often, you can skip automatic library synchronization. From Preferences, select “Synchronize library manually”. When manual synchronization is enabled “Synchronize Media Library” appears in the Media menu.



Selecting “Synchronize Media Library” from the Media menu re-synchronizes the handheld device and memory card with the media library, ensuring that the media browser display matches the stored media files.

## **Video Support**

Kinoma Player 4 EX takes advantage of extended screen space on most devices that feature widescreens with the ability to hide the Graffiti text input area.

Kinoma Player 4 EX provides support for playback of hi-resolution content on handhelds with hi-resolution displays.

## **External Storage Support**

Because digital media files can be quite large, Kinoma Player 4 EX supports the playback of digital media from external storage including Compact Flash, Memory Stick and SD & MMC Memory cards. On devices that have multiple external storage devices, Kinoma Player 4 EX displays the content found on all external storage devices. Details on using external storage are provided below.

## **5-Way Navigation Support**

Kinoma Player provides full support for the 5-way navigation control found on handhelds from Palm, Tapwave and others. This support enables single handed operation of Kinoma Player 4 EX. Details on using 5-way navigation are provided throughout this document.

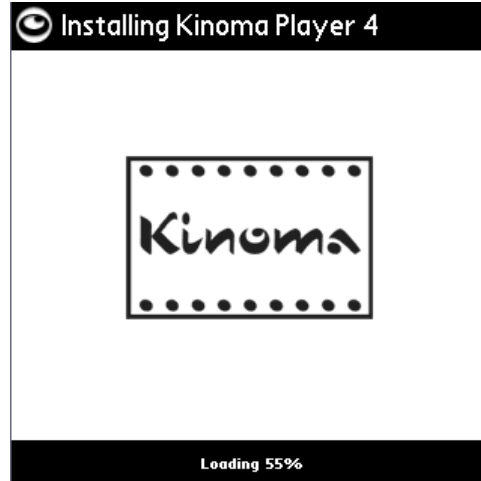
## **Jog Dial Support**

Kinoma Player 4 EX provides full support for the jog dial control and back button found on handhelds from Sony. This support enables single handed operation of Kinoma Player 4 EX. Details on using jog dial control are provided throughout this document.

## ***Installing Kinoma Player 4 EX***

To install Kinoma Player 4 EX, run the Kinoma Installer on your handheld. The Kinoma Installer is a standard Palm application. If you are not familiar with how to install and run Palm applications on your handheld, detailed instructions are provided below.

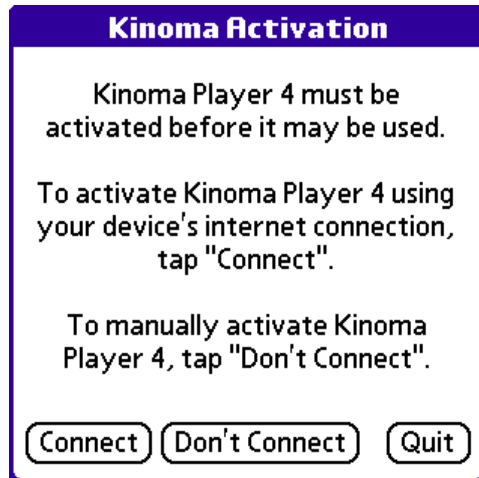
When you run the Kinoma Installer on your handheld, the installer copies Kinoma Player 4 EX onto your device.



When the installation is complete, Kinoma Player 4 EX is launched. If the Kinoma Installer resides in internal device memory, it is automatically deleted.

### **Activation**

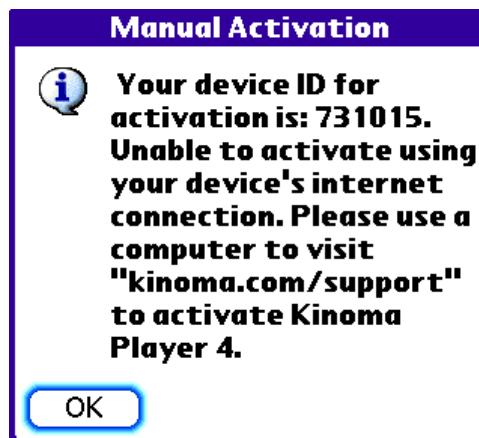
Kinoma Player 4 EX must be activated for use on your handheld or phone. When you launch a copy of Kinoma Player 4 EX that has not yet been activated, you are prompted to begin the activation process. If your device has an internet connection, you can activate Kinoma Player 4 EX automatically; otherwise, activation is a manual process that requires a web browser on a computer.



If your handheld device connects directly to the internet, select Connect. The activation process proceeds by connecting to the Kinoma web site. The following forms are displayed during a successful activation.



If your handheld device does not have an internet connection, select Don't Connect to activate Kinoma Player 4 EX manually.



To complete manual activation process, use a web browser on a computer to visit <http://kinoma.com/support>. The device ID displayed on the Manual Activation form is required to complete activation when on the web site.

## **“Over the air” installation**

If you purchase Kinoma Player 4 EX using your handheld, for example from a Treo phone, the Kinoma Installer application is downloaded directly to your handheld at the end of the purchase process. When the download is complete, launch the Kinoma Installer. When installation is complete, the installer is deleted and Kinoma Player 4 EX is launched.

## **Memory Card Installation from Windows and Macintosh**

If you use a memory card such as an SD Memory card or Memory Stick to transfer files to your handheld:

1. Copy the Kinoma Installer to the \palm\launcher\ directory on the memory card. The installer file should be named “KinomaInstaller.prc”.
2. Put the memory card into your handheld
3. Launch the Kinoma Installer
4. When installation is complete, Kinoma Player 4 EX is launched automatically.

## **HotSync Installation from Windows**

If you use HotSync to transfer files to your handheld:

1. Launch the “Install Tool” or “palmOne Quick Install” program in the Palm Desktop or Sony Handheld folder in your Start Menu.
2. Click the “Add” button, select the Kinoma Installer. The file should be named “KinomaInstaller.prc”. Alternatively, you can drag the Kinoma Installer file directly into the list of files to install.
3. If you are using “Install Tool”, click the “Done” button; if you are using “palmOne Quick Install”, exit the application.
4. HotSync your handheld following the handheld’s manufacturer instructions.
5. Launch the Kinoma Installer.
6. When installation is complete, Kinoma Player 4 EX is launched automatically.

## **HotSync Installation from Macintosh**

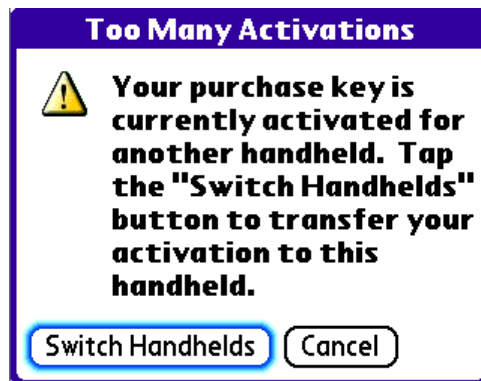
1. Launch the “Palm Desktop” application.
2. Select “Install Handheld Files...” from the HotSync menu
3. Drag the Kinoma Installer application into the list of items to install (the Kinoma Installer is called “KinomaInstaller.prc”). Alternatively, click the “Add To List” button and select the Kinoma Installer application from the file selection dialog.
4. HotSync your handheld following the handheld’s manufacturer instructions.
5. Launch the Kinoma Installer.
6. When installation is complete, Kinoma Player 4 EX is launched automatically.

## ***Switching Handhelds***

Kinoma Player 4 EX allows you to transfer your product activation to another compatible internet connected handheld. Please note that you may only switch your product activation between handhelds once every six months.

To transfer your product activation to your new handheld, you must first install Kinoma Player 4 EX on the new handheld. The Kinoma Installer may be downloaded from the link provided in your purchase e-mail. Transfer the Kinoma Installer to your handheld and install Kinoma Player 4 EX using one of the methods described above.

During activation, Kinoma Player 4 EX detects installation of your product purchase on another handheld.



Tap the “Switch Handhelds” button to activate Kinoma Player 4 EX on your new handheld. Kinoma Player 4 EX on the other handheld will be deactivated.

## ***Uninstalling Kinoma Player 4 EX***

Uninstalling Kinoma Player 4 EX follows the same steps as uninstalling any other application on your handheld.

1. Tap the “home” icon on your handheld to return to the Application Launcher.
2. Tap the “menu” icon to display the Application Launcher menus.
3. Tap “Delete...” from the “App” menu.
4. When the delete dialog appears, select “Kinoma”.
5. Tap the “Delete...” button
6. A confirmation dialog is displayed. Select “Yes” to delete Kinoma Player 4 EX.

**Note:** When you delete Kinoma Player 4 EX, your bookmarks are not deleted. Bookmarks are stored in a separate file called “Kinoma Bookmarks”.

## ***Installing Content***

Digital media content can be installed onto your handheld in several ways.

- You can use the standard palmOne “Quick Install” or HotSync “Install Tool” applications to install digital media onto your handheld. The procedure for installing content is the same as the procedure for installing applications, which is described in the previous section.
- You can copy content onto a memory card. Kinoma Player 4 EX scans all directories for encoded digital media content. If you are unsure where to store your digital media, Kinoma recommends storing media files in the “\palm\programs\kinoma\” directory.
- Kinoma Producer 4 lets you optimize your digital media for the best playback results on your particular handheld model. After it is encoded, Kinoma Producer 4 can automatically transfer the encoded media to your handheld via HotSync or by copying it to a memory card. Kinoma Producer 4 is available for computers running Windows and Mac OS X.
- On handhelds with an internet connection, you can access content directly from the internet using Kinoma Player 4 EX.

## Using Kinoma Player 4 EX

Kinoma Player 4 EX has two main modes of operation: browsing to select a digital media document to play and viewing the selected digital media document.

### Browsing and selecting digital media

When you launch Kinoma Player 4 EX it starts in browse mode.

At the bottom of the screen is a tool bar you use to control the information displayed while browsing. In the middle of the tool bar are seven tabs to select the media type to display: video, audio, pictures, interactive, internet bookmarks, play lists and all media types.

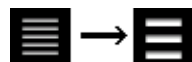


By default, all types of media are displayed as shown below:



**Keyboard Tip:** Press the space bar to quickly switch among the seven media type icons used to select the type of media to display.

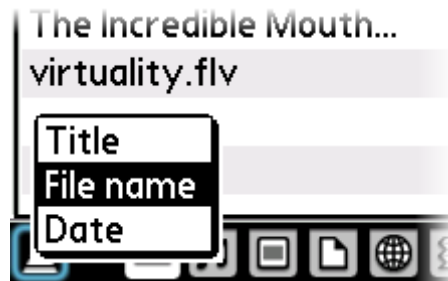
The icon on the right edge of the tool bar toggles between a compact list view and a detailed list view. In the compact list view, one line is displayed for each document; in detailed list view, two lines are displayed for each document.



In detailed list view additional details are displayed for each item. The kind of additional information displayed depends on the media type of the item.




On the left of the tool bar is a menu that controls the display of items in the list. Use the menu to change the sort order and the details displayed. The options presented vary based on the media type you are browsing. For example, when browsing audio you can choose to sort by artist or song title; when browsing pictures you can choose to display the image dimensions or the file size.

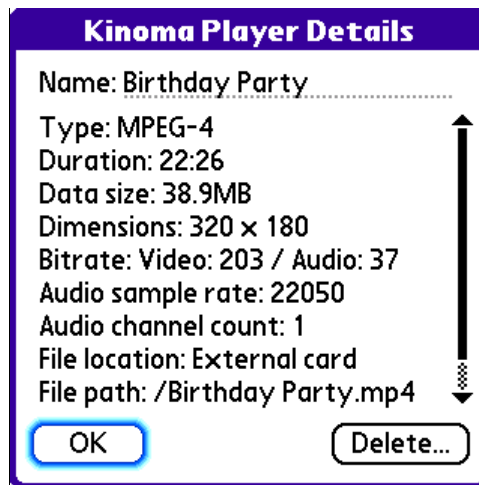


**5-way tip:** You can operate the browsing screen using the 5-way navigation control.

**Jog Dial tip:** Use the jog dial to scroll through the list of available digital media documents. To play the selected item, press the jog dial button. To return to the launcher application, press the back button.

In the far right column is the information icon. Select the icon to display additional details about the item such as the copyright notice, file size and duration. For most file types, you can rename and delete the item from the details form. The document icon looks like this: 

Here is an example details screen:



If the item is a file, you can change the name by entering the new name in the Name field at the top of the form and selecting OK. The name may be up to 31 characters in length.

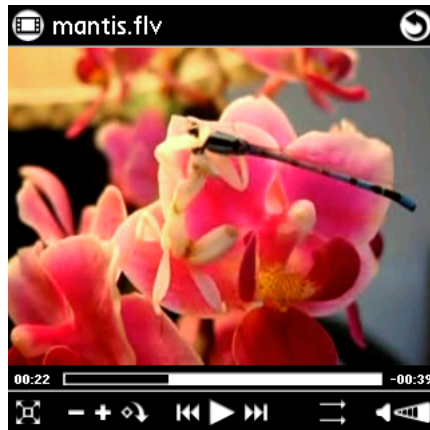
Some file formats, including MPEG-4, QuickTime, 3GPP and Windows Media, allow a title to be embedded in the file itself. The rename function in Kinoma Player 4 EX changes the file name, not the embedded title.

Select the delete button to permanently remove the item from device memory or external storage.



## Playing media

After choosing an item to play, the selected media item is displayed in the player screen. An example video playback screen is shown below.



The playback controls are displayed along the bottom of the screen. Details on using each control are provided below.



Use the play button to start the media playing. While the media is playing, use the pause button to stop the media.

**Keyboard tip:** Use the space bar to play and pause the media item.

**Jog Dial tip:** Press the jog dial to play and pause the media item.



Select the previous item and next item buttons to leave the current media item and move to the previous or next item. You can also use these buttons to fast forward and fast reverse through the current item by selecting and holding these buttons.

**Jog Dial tip:** Use the jog dial to navigate movies. Press and turn the jog dial up to go to the previous media item. Press and turn the jog dial down to go to the next media item. Press the back button to return to the media browser.



Select the back button to return to the previous media browsing list view. If Kinoma Player 4 EX was launched by a web browser as a helper application to stream media on a web page, the back button returns to the web browser.

**Keyboard tip:** Use the back space button on the keyboard to go back to the media browsing list view.



Use the “+” button to zoom in and the “-” button to zoom out of videos, pictures and QuickTime VR panoramas. If part of the image is hidden off the edge of the screen, tap the image and drag to show the part of the image you want to see. When you have zoomed in or out as far as possible, the zoom in or zoom out button is disabled. For QuickTime VR panoramas, the zoom buttons provides smooth continuous zooming.



Select the rotate button to turn the image 90 degrees clockwise.



Select the full screen playback button to hide the playback controls while the media plays. When the button is pressed, the playback controls animate away. On devices with a Graffiti area and/or status bar that can be hidden, Kinoma Player 4 EX hides them for media items larger than the current display size.

**5-way tip:** In full screen mode, use the center button to play and pause, the left and right buttons to move to the previous and next media item and the up or down buttons to exit full screen mode.



The time control indicates the current time of the media. Tap on the time slider to jump to a time within the media. The current time is displayed on the left and the time remaining is displayed on the right.



Use the volume control to change the playback volume. Tap in the slider area to adjust the volume. If there is no audio in the current media item, the volume control is not displayed.

**Treo tip:** On Treo phones, the volume buttons on the left side of the phone also adjust the volume.



Use the playback mode controls to choose the sequence in which media items are played. Kinoma Player 4 EX has five playback modes: Play all in sequence, repeat all, repeat one, play one and shuffle all. Select the playback mode icon to toggle through the four playback modes.



Use the home button to return to the default view of QuickTime VR panoramas. The button is only displayed for panoramas.

On some handhelds, the Graffiti input screen area at the bottom of the screen is “virtual.” That means that it is drawn using software rather than being physically printed on the device. Because it is drawn in software, the Graffiti input area can be hidden to provide more room to view your digital media. On these handhelds, use the button in the status bar to control the visibility of the Graffiti input area.

## **Playing streaming media**

Kinoma Player 4 EX contains extensive support for playback of internet streaming media. For the most part, playing streaming media is just like playing an audio or video file from your local device. However, there are some differences primarily due to bandwidth limitations. If you are comfortable playing streaming media on a computer, playing streaming media with Kinoma Player 4 EX will be familiar.

One of the best ways to get started with streaming media is to use the Kinoma Media Guide. The guide is available through a built-in bookmark in Kinoma Player 4 EX. Use the guide to explore streaming audio, video, podcasts, radio stations, and photo feeds for playback in Kinoma Player 4 EX.

The following sections detail different aspects of streaming playback using Kinoma Player 4 EX.

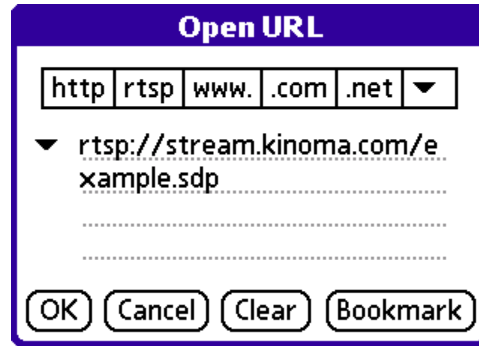
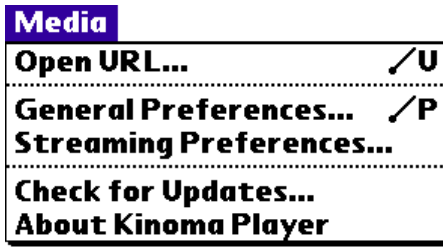
### *Streaming from a web browser*

A common way to play streaming media in Kinoma Player 4 EX is to select a link in the web browser on your handheld. Select the link and the web browser launches Kinoma Player 4 EX to begin streaming playback.

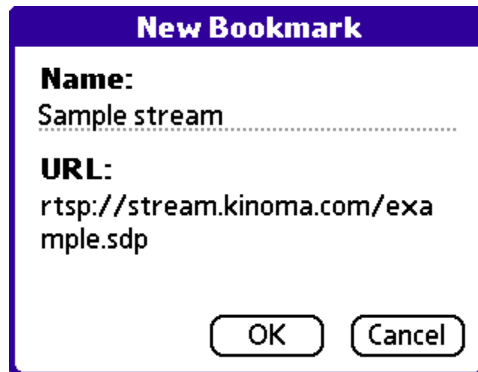
Not all web browsers on Palm OS support launching external applications. The Palm Blazer browser version 4.5 on the Treo 680 and 700p smart phones fully support launching Kinoma Player 4 EX for streaming media playback.

### *Streaming from a URL*

If you know the URL of the media you want to play, use the “Open URL...” menu item from the Media menu when you are on the Browse screen in Kinoma Player 4 EX. Open URL opens any supported media type, including audio, video images, podcasts and play lists.

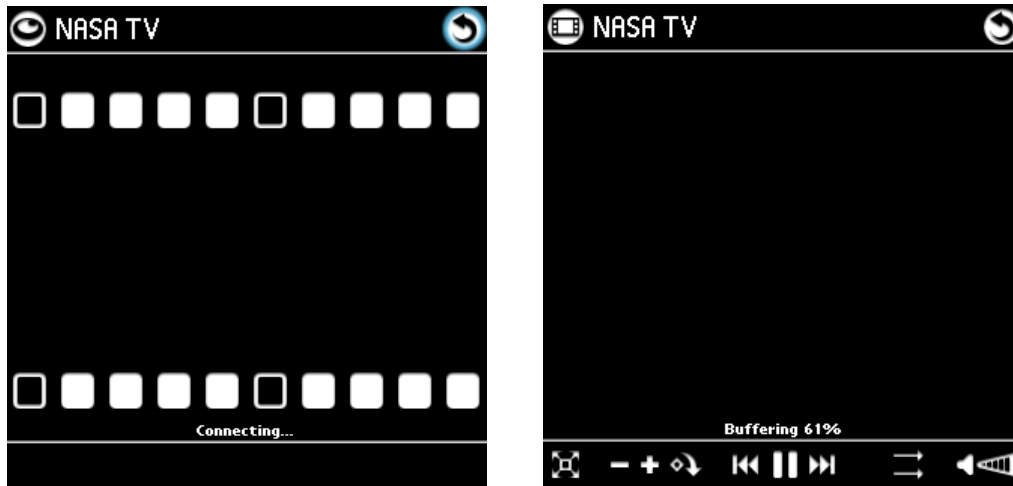


The short-cuts bar along the top of the Open URL form helps you to enter the URL more quickly. The menu on the left edge of the form stores URLs you have entered recently. To create a new bookmark with the URL you have entered, select the Bookmark button. The “New Bookmark” form allows you to name the bookmark. You can also create a bookmark while viewing the any internet media item by selecting “Add Bookmark” from the player menu.



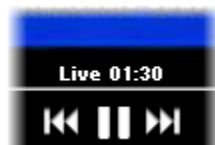
### *Connecting and buffering*

When you open digital media stored on your device’s internal memory or on a memory card, playback begins immediately. For digital media streaming from the internet, Kinoma Player 4 EX must first connect to the web site and buffer a few seconds of data before playback can begin. While connecting and buffering, status information is displayed above the playback controls.



### *Live streams*

Some audio and video streams are broadcast live, for example a streaming radio station. Live streams have no duration, so it is not possible to move forward and backwards in time. For live streams, the time slider is replaced with a status message that shows how long you have been playing the stream.



You can pause a live stream. When resuming from pause, playback continues at the current time rather than at the time the stream was paused.

Some streams are not truly live, but the web site that is streaming the media is configured to make it appear live for some reason, for example to disallow skipping over portions of the stream. These pseudo-live streams are indistinguishable from true live streams in Kinoma Player 4 EX.

### *Limited seeking*

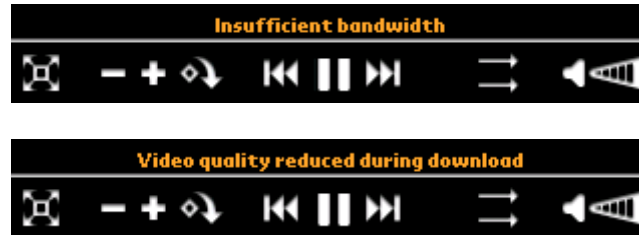
When playing some streams, because of playback restrictions of the file format or the web site, it is not possible to seek to an arbitrary time within the stream. In these situations, Kinoma Player 4 EX grays out the portion of the time slider that cannot be reached by seeking. In the image below the end of the black area indicates the current time, the white area indicates the period of time that is available for playback, and the gray area indicates the time segment not yet available for playback.



As data arrives from the network, the amount of time available to playback increases, so the gray area shrinks while the white area grows.

### *Warnings during playback*

Sometimes during playback of a stream, Kinoma Player 4 EX will detect a potential problem. For example, your current internet connection may not be fast enough to playback the selected stream, or your device's CPU is not fast enough to play the video smoothly. Warning messages are displayed in the same area as the time slider.



When a warning is active, Kinoma Player 4 EX makes a best-effort attempt to play the stream. The quality of the playback may be noticeably reduced in some way – the video may not be smooth or the stream may pause and re-buffer often.

### *Progressive download and saving streams*

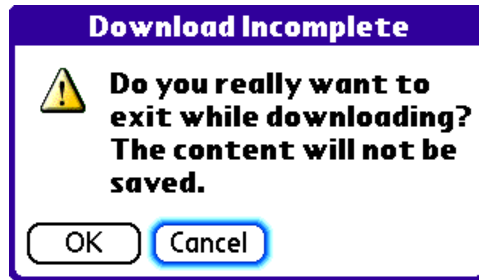
For some internet media, Kinoma Player 4 EX can use two different playback methods: streaming and progressive download. Streaming allows seeking through the file and requires no storage space on a memory card; by contrast, progressive download allows seeking only through the portion of the media that has been downloaded and requires space on a memory card to cache the downloaded portion of the media.

By default, Kinoma Player 4 EX chooses streaming over progressive download when a choice is available. However, in some circumstances – for example if there is insufficient network bandwidth to stream smoothly or you want to save the stream for later playback – progressive download is a better choice. Use the Preferences form to override the default behavior to prefer progressive download over streaming.

When a stream is being played using the progressive download method, Kinoma Player 4 EX displays a memory card icon on the top right corner of the screen, adjacent to the back button. If you select the memory card icon, a check mark is placed on the memory card indicating that you want to save the stream.



If you try to exit playback of the stream before download is complete and the memory card icon is checked, a confirmation dialog is displayed.



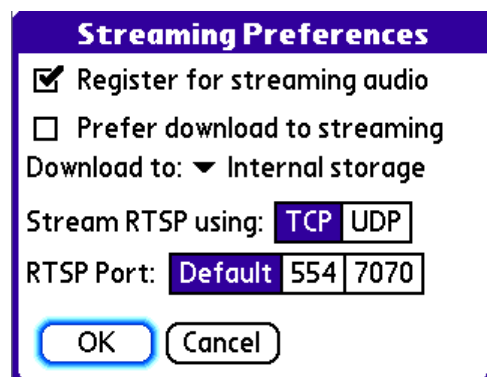
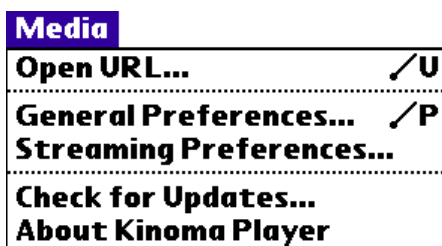
While downloading, Kinoma Player 4 EX must write the incoming media data to internal memory or a memory card. Because writing the data takes additional time, in some cases the video frame rate will be reduced while the download is in progress. Once the download is complete, the video frame rate of the clip will generally improve.

**Note:** The ability to save streams is provided to allow you to save content for playback on your device at a later time and to play clips requiring more bandwidth than your internet connection supports. Saved streams are for your personal use only and may not be shared or otherwise redistributed without permission of the copyright holder. If you have any questions about your rights to use any saved stream, please visit the web site of the content owner.

**Note:** Some streams are designated as “no save” by the content owner. Kinoma Player 4 EX does its best to respect this designation. If you are a content owner and you believe Kinoma Player 4 EX is not properly enforcing your content rights, please contact Kinoma’s customer support.

## Streaming Preferences

Select the “Streaming Preferences...” menu item to display the Streaming Preferences form.



The “Register for streaming audio” checkbox lets you control whether Kinoma Player 4 EX is launched to play back streaming audio delivered from web browsers and other applications. When checked, Kinoma Player 4 EX registers with the Palm OS to receive

and play back audio streams and audio play lists. If the control is not checked, Kinoma Player 4 EX does not register for streaming audio playback.

Select “Prefer download to streaming” to override the default preference for streaming playback. When “Prefer download to streaming” is selected, Kinoma Player 4 EX uses progressive download whenever possible. When using progressive download, make sure your device’s memory card has enough free space to store the content you are playing – typically 10 to 20 MB or you will not be able to play the content using progressive download.

**Note:** Some web servers and media file formats support only one playback method – either progressive download or streaming. In these cases, the “Prefer download to streaming” setting is ignored.

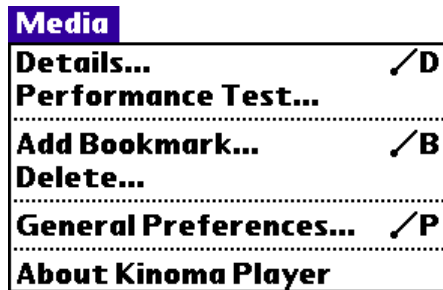
When using the progressive download playback method for internet media items, the “Download to” menu selects where the media data is stored. Select “internal storage” to force all downloads to be stored in device memory and “external storage” to force all downloads to be stored on a removable storage card.

Some carrier networks block RTSP streaming using UDP. When Kinoma Player 4 EX detects this condition, an informative alert is displayed suggesting you switch to TCP. To receive RTSP using “TCP” press the “TCP” button. By default, Kinoma Player 4 EX is configured to receive RTSP using “UDP.”

In rare cases, some carrier networks require RTSP to be received over a non-standard port. Use the “RTSP Port” buttons to select an alternate port.

## ***Player Menus***

Kinoma Player 4 EX has additional capabilities available through the application menu on the player screen. To access the menus, use the menu button on your handheld to display the Media menu.



## **Details**

The “Details” menu item displays additional information about the digital media document currently being displayed. This information may include the full name, duration, data size and copyright. You may also rename the media from the details form.

## **Performance test**

The “Performance test” menu item allows you to determine the maximum frame rate that your handheld can play the current digital media document. Every frame of the entire clip is played from beginning to end as quickly as possible. This operation cannot be interrupted. When playback is complete, the total elapsed time, number of frames played and average frame rate of playback are displayed. Frame rates vary depending on whether playback is from internal memory or from a removable storage device. Playback from a removable storage device typically results in a lower rate because of the additional time required to read the media data from the removable storage.

**Note:** Performance Test is not supported for all file formats and network protocols.

## **Add Bookmark**

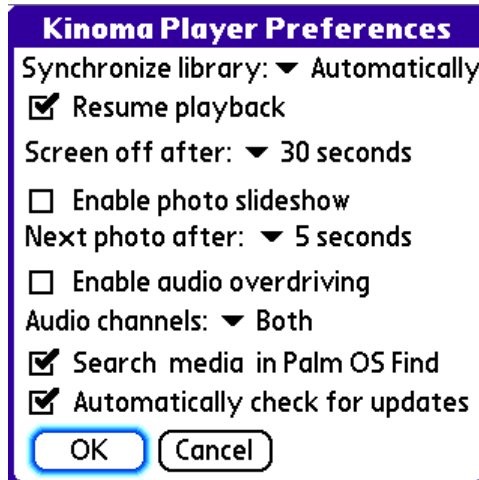
Use the Add Bookmark menu item to create a new bookmark for the current media item. The Add Bookmark menu item is only shown when playing media stored on the internet; it is not shown for media stored on your device.

## **Delete**

The “Delete” menu item removes the currently displayed digital media document from your handheld. Before the document is deleted, a confirmation dialog is displayed. If the document is stored on external storage it is deleted from the external storage device. The delete operation cannot be undone, so use it with caution.

## **General Preferences**

Select the “General Preferences...” menu item to display the Kinoma Player Preferences form.



The “Synchronize library” menu lets you specify whether the media library is automatically synchronized each time the application is launched or if the library should only be synchronized manually. For more details, see the “Content Synchronization” section.

When “Resume playback” is checked, Kinoma Player 4 EX remembers where you stopped playing each video and audio clip. The next time you play the same clip, Kinoma Player 4 EX starts from the time you last stopped. Kinoma Player 4 EX remembers where you stopped playing for both for digital media on your device and media streams from the internet. This is convenient, for example, when listening to a long podcast. Some web sites do not support Resume; in that case, Kinoma Player 4 EX resumes playback from the beginning. If “Resume playback” is not checked, Kinoma Player 4 EX always begins playing from the start of the clip.

The “Screen off” menu is a power saving feature available for the Tapwave Zodiac and certain Palm handheld models. When playing audio clips, the duration set here determines how long to wait before turning off the screen to save battery power.

When viewing JPEG images, Kinoma Player 4 EX can optionally provide a slide show behavior when the play button is selected. Check the “Enable photo slideshow” button to enable slide show mode for images. Use the “Next photo after” menu to set the number of seconds each image is displayed in the slide show.

The “Enable audio overdriving” check box lets you increase the range of the audio volume control so that you may increase the volume beyond 100%. Overdriving is useful on handhelds with small speakers. However, it may introduce distortion into some audio. If “Enable audio overdriving” is not checked, the range of the audio volume control is 0 to 100%; when checked, the range is 0 to 150%.

Use the “Audio Channels” menu to select the audio channels to hear for digital media items with stereo audio. For the majority of media, the default of “Both” is appropriate.

Some media is provided in two languages – one in the left channel and the other in the right channel. In these cases, select “Left” or “Right” so only one language is heard.

Kinoma Player 4 EX searches media files on your handheld device and memory card when you perform a Palm OS Find. Uncheck the “Search media in Palm OS Find” check box to remove Kinoma Player 4 EX from the applications used during Palm OS Find.

Kinoma Player 4 EX automatically checks for product updates once a week on devices that can connect to the internet. Uncheck the “Automatically check for updates” check box to disable this feature. You can check for product updates at any time by selecting the “Check for Updates...” item from the browse form.

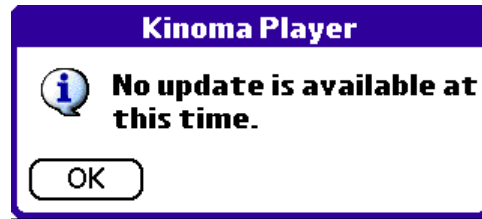
### **About Kinoma Player**

This menu item displays a screen with information about Kinoma Player 4 EX including the software version number. Select the Owner... button to display your product registration information. Select the More... button for information about some licensed technology incorporated into Kinoma Player 4 EX.



### **Updates to Kinoma Player 4 EX**

If your device is connected to the internet, you can check for free updates to Kinoma Player 4 EX using the “Check for Updates” menu item on the browse form. When you select “Check for Updates” Kinoma Player 4 EX connects to the Kinoma web. If an update is available, you can download and install it.



To ensure that you have the latest version of Kinoma Player 4 EX, Kinoma recommends that you check for updates once a month.

If your device does not have an internet connection, you can check for updates to Kinoma Player 4 EX by visiting the Kinoma web site at <http://www.kinoma.com>.

## ***Product Support***

Support for Kinoma Player 4 EX is available to users who have purchased the software. A list of frequently asked questions together with their answers is available online at:

<http://www.kinoma.com/faq>

Please check this page first for the fastest answers to your questions. If the frequently asked questions page doesn't answer your questions, check the Kinoma support forum to see if other Kinoma users may have already provided an answer to your question. The Kinoma support forum is available online at:

<http://www.kinoma.com/forum>

Customer support is available by sending a message to customer support from the following web page:

<http://www.kinoma.com/emailsupport.html>

Most support email questions are answered within 48 hours of being received. Email support is available at no charge for the first 90 days after purchasing Kinoma Player 4 EX.